



INSTRUCTION BULLETIN

No. 340204
Machine: 4300
Published: 12-98/00
System: OPTIONS

NOTE: DO NOT DISCARD the Parts List from the Instruction Bulletin. Place the Parts List in the appropriate place in your machine manual for future reference. Retaining the Parts List will make it easier to reorder individual parts and will save you the cost of ordering an entire kit.

NOTE: Numbers in parenthesis () are reference numbers for parts listed in Bill of Materials.

Installation instructions for kit number 368049

SYNOPSIS / PROBLEM:

This kit contains the parts needed to install demo hold down kit on the model ATLV 4300 sweeper.

Please follow step-by-step instructions.

SPECIAL TOOLS / CONSIDERATIONS: Hand drill, .437 in. drill bit

(Estimated time to complete: 1 hour)

INSTALLATION:

(Refer to FIG. 1 and 2)

FOR SAFETY: Before leaving or servicing machine, stop on level surface and set parking brake. Then turn off machine and remove key.

1. Use the dimensions in Fig. 1 to locate, mark, and drill the four mount holes for the two tie-down brackets (1).
2. Install the two tie-down brackets (1) on either side of the machine (pointing down) using four hex screws (2), washers (4), and nuts (3). Tighten tight.
3. Use the new tie-down brackets to attach hold down chains to the machine when transporting the ATLV 4300 on a trailer.

BILL OF MATERIALS FOR DEMO TRAILER KIT 368049

| Ref. | TENNANT Part No. | Description | Qty. |
|------|---------------------|-----------------------|------|
| 1 | 368104 | Tie down bracket | 2 |
| 2 | 09028 | M10 hex screw, 25mm | 4 |
| 3 | 07792 | M10 flange nut | 4 |
| 4 | 01686 | Flat washer, .375 in. | 4 |

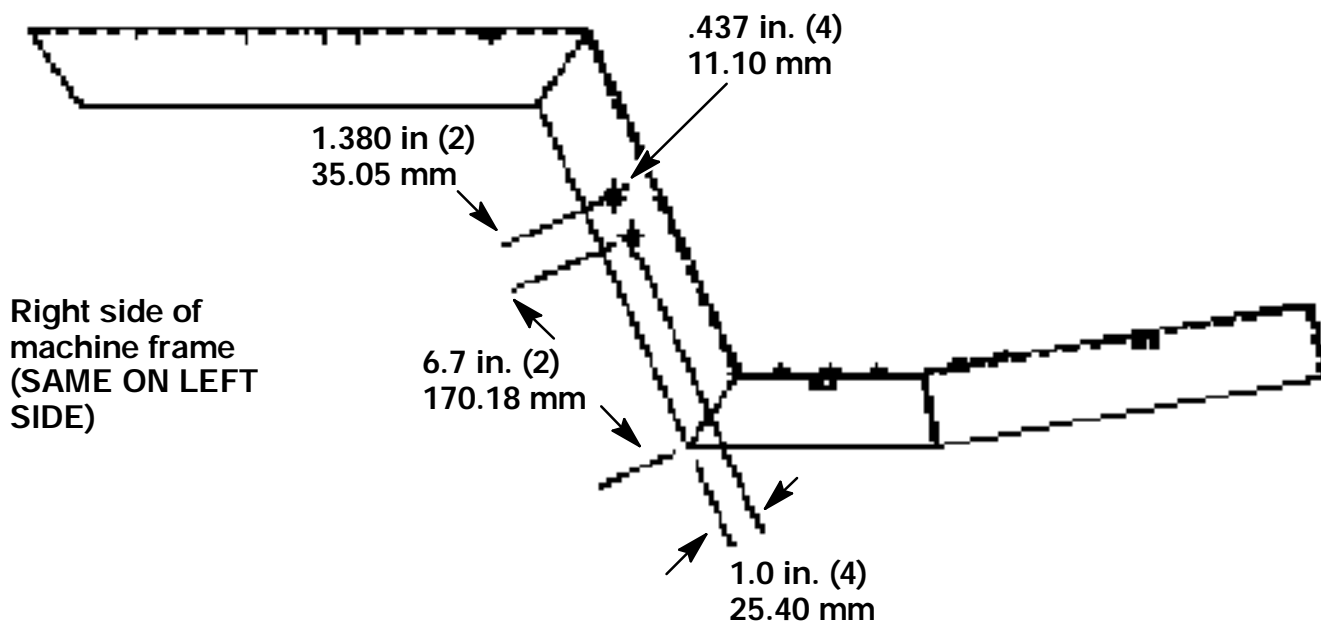


FIG. 1 - Bracket Mount Hole Location Drawing

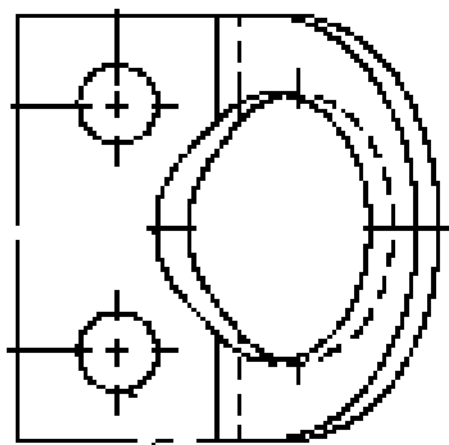


FIG. 2 - Tie Down Bracket 368104

TENNANT COMPANY
P. O. Box 1452
Minneapolis, MN 55440-1452